





DELPHINIUM

BY JANET CLARE

"Let your heart be light"

I saw delphiniums for the first time with my dearest friend Rosie.

It was the first time we'd been together for a long time; we'd just enjoyed a delicious lunch in a little restaurant set in the grounds of a garden. The sun was shining, we were all content and happy to be together at last, and then we saw the delphiniums...love at first sight!

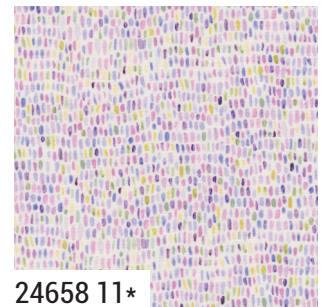
Huge, tall spires of flowers in every shade of blue and lilac, the softest pinks and mauves filling the borders and catching our imaginations. Captivating!

I couldn't wait to get home to my paints to capture the lovely afternoon forever.

moda MARCH DELIVERY

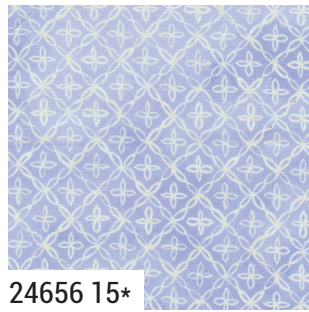


DELPHINIUM BY JANET CLARE

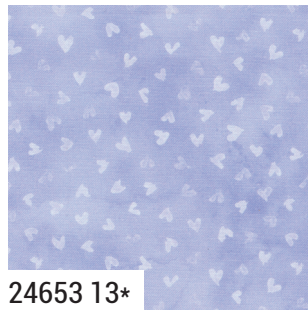


moda MARCH DELIVERY

DELPHINIUM BY JANET CLARE



24656 15*



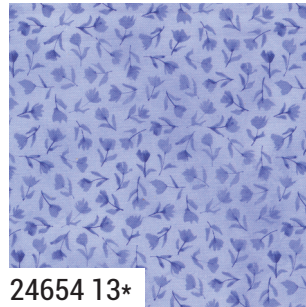
24653 13*



24650 13*



24651 13*



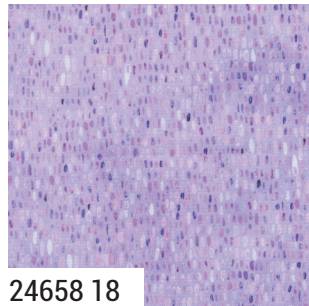
24654 13*



24660 13



24653 14



24658 18



24660 15



24650 17*



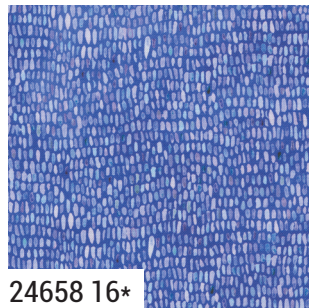
24650 15*



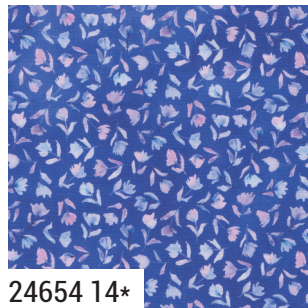
24652 16*



24651 15*



24658 16*



24654 14*



24656 18*



24660 14

24650

Asst.
15

Asst.
10

Low Cal
10

AB

JR

LC

MC

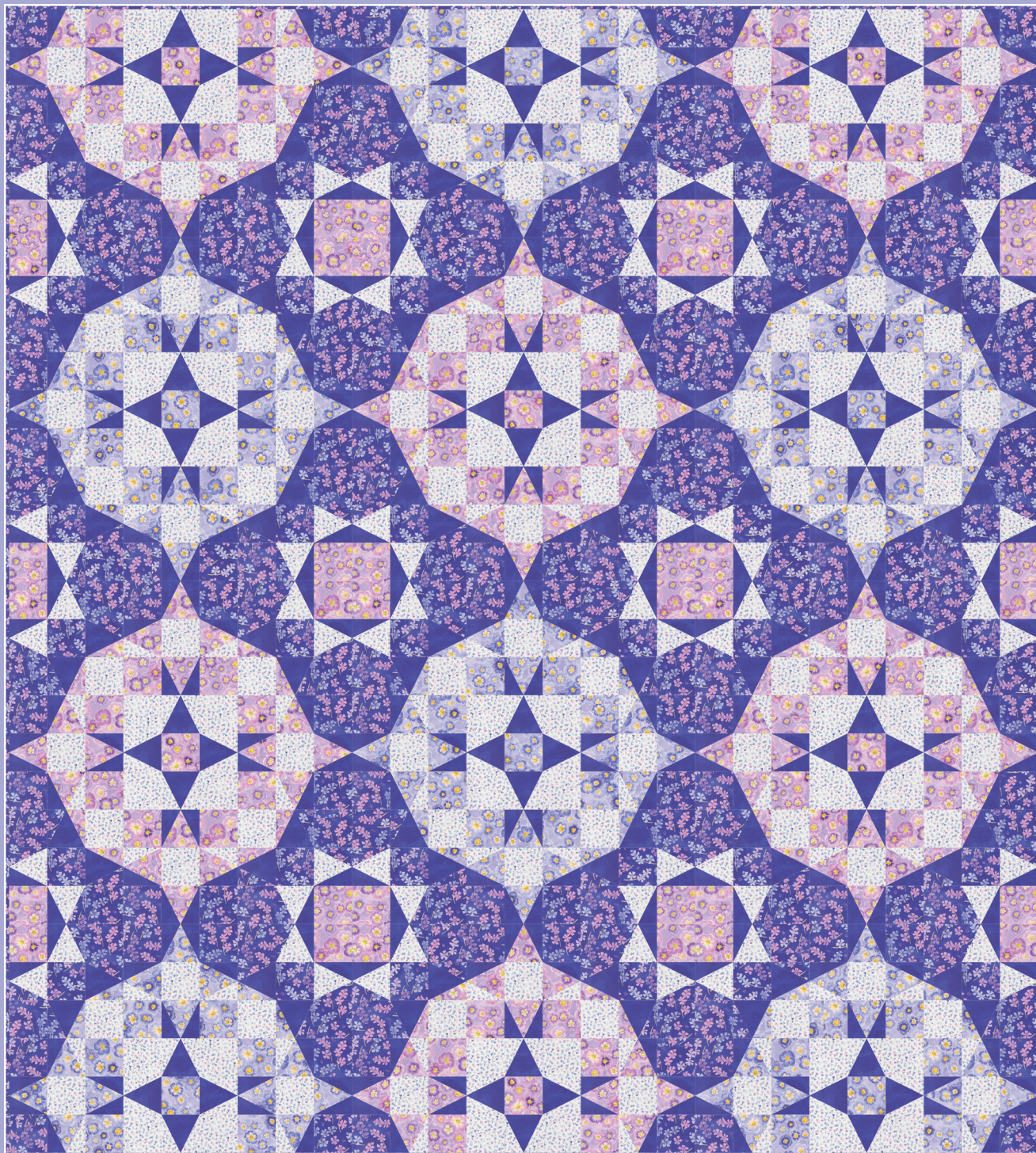
PP

MARCH DELIVERY

•26 Prints •100% Premium Cotton

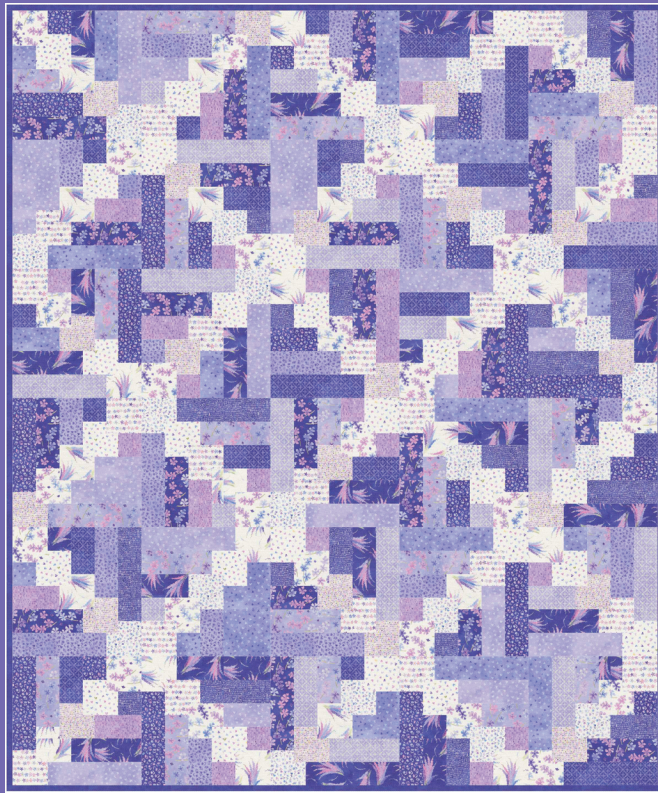
AB includes all 26 skus. JRs, LCs, MCs & PP include 26 skus with two each of 24650, 24652, 24653-11, 24658-11, 24659-11 & 24660.

DELPHINIUM BY JANET CLARE

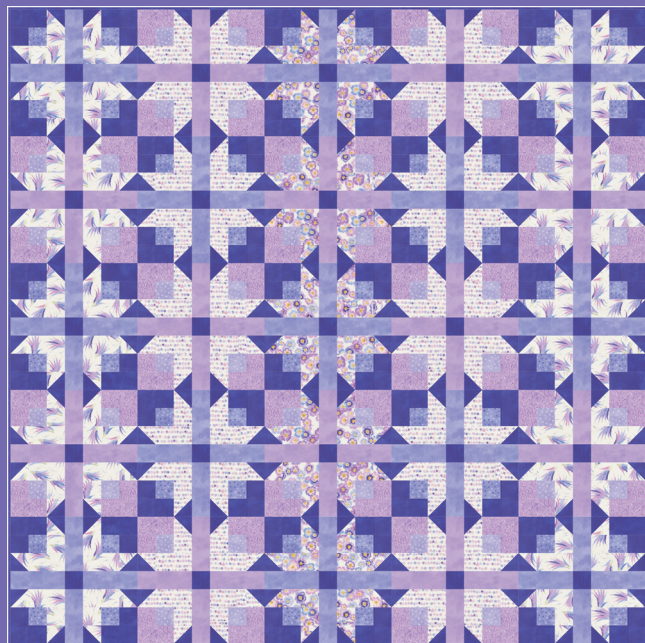


JC 268 Iris 81" x 90"

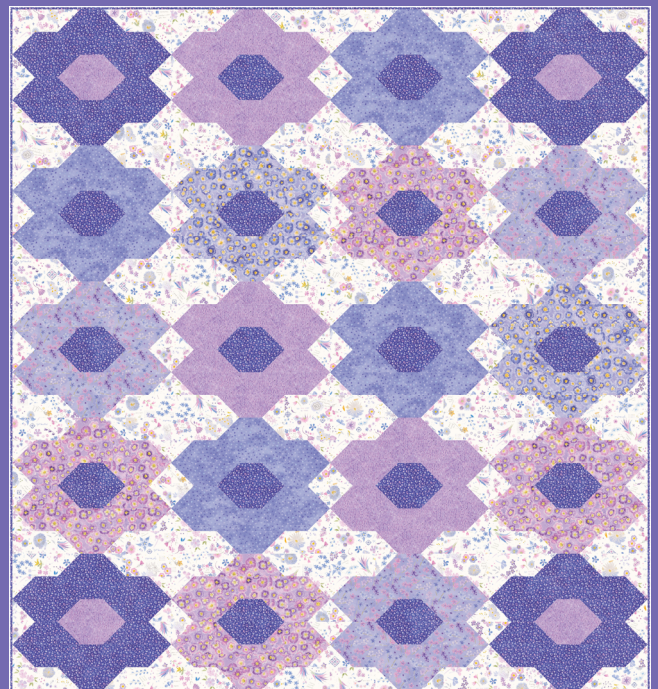
DELPHINIUM BY JANET CLARE



HQ 132 Stacked Squares 55" x 66" AB Friendly
by Happy Quilting



JC 269 Heather 70" x 70"



JC 270 Violet 77" x 82"